

Maths Mastery Home Learning Challenge

Adult Guidance

What Are We Learning?

We are learning to use positional language, such as **behind**, **in**, **under**, **on**, **above**.

How to Set up the Challenge

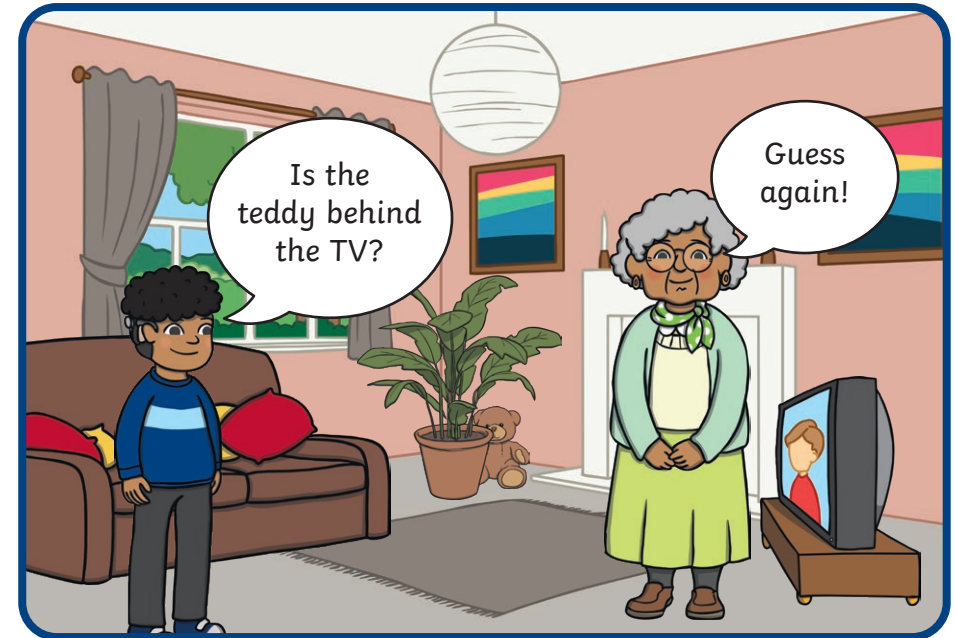
- Find a small teddy or other toy, such as a car or doll.
- Let your child hide the toy somewhere in the house.
- Ask questions about the location of the toy, starting with the room the toy is in. For example, 'Is it **in** the kitchen?'
- Once you are in the correct room, narrow the questioning down. For example, 'Is it **behind** the curtains?' or 'Is it **in front of** the TV?'
- Continue until the toy is found.
- Then, hide the toy yourself and let your child ask the questions. Encourage them to use positional language as they ask their questions.

How to Get Your Child Thinking

- Where shall we hide the teddy next?
- The teddy has been behind the curtains. Shall we put him in front of something?
- The teddy is on top of the TV. What else can we put the teddy on top of?
- Is there anything in-between the teddy and the door?
- What is behind the teddy?
- Can you put the teddy above something?
- Talk about the position of objects at other times. For example, when walking to school with your child, ask 'What is behind that tree?' or 'What can you see on top of that roof?' to encourage them to use positional language.
- Help your child to draw a map of familiar places or routes, marking objects and talking about their position.



Hunt the Toy



- Find a small teddy or other toy.
- Hide the toy somewhere in your house. Remember to ask your grown-up first if there are any places you shouldn't put the toy.
- Let your grown-up ask you questions to try and find where the teddy is hidden.
- When they have found the teddy, they can hide it and it is your turn to ask the questions.