

Year 2 Spring 1 Maths Activity Mat 6

Section 1

Put the correct operation into the calculations to complete the number sentences.

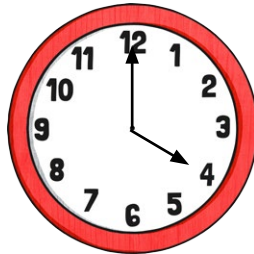
$$12 \square 11 = 23$$

$$14 \square 6 = 8$$

$$5 \square 3 = 15$$

Section 2

What time is shown on the clock?



Section 3

What unit of measurement is used to measure the winning time of a short running race? Tick your answer.

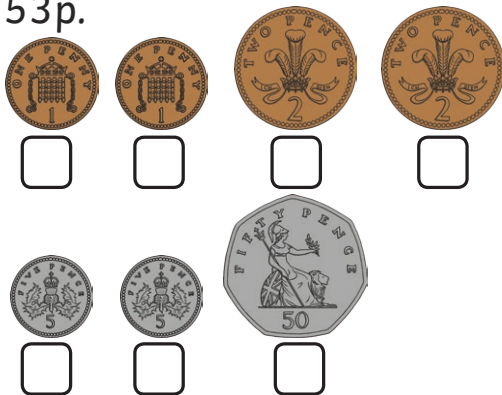
- km hours
 seconds m

Section 4

14 people visited a museum. Six were adults. How many were children?

Section 5

Tick the coins that make 53p.



Section 6

What 3D shape has six faces and eight vertices?

Section 7

Amy had 10p. She spent 7p. What coins will she get as change?



Section 8

13 is five less than what number?

Year 2 Spring 1 Maths Activity Mat 6 Answers

Section 1

Put the correct operation into the calculations to complete the number sentences.

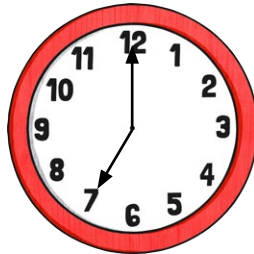
$$12 \boxed{+} 11 = 23$$

$$14 \boxed{-} 6 = 8$$

$$5 \boxed{\times} 3 = 15$$

Section 2

What time is shown on the clock?



7 o'clock

Section 3

What unit of measurement is used to measure the winning time of a short running race? Tick your answer.

- km hours
 seconds m

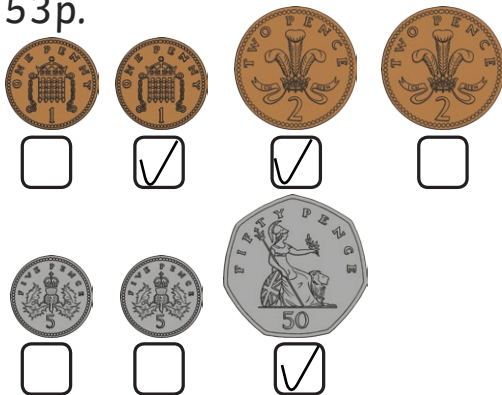
Section 4

14 people visited a museum. Six were adults. How many were children?

8

Section 5

Tick the coins that make 53p.



Section 6

What 3D shape has six faces and eight vertices?

cube or cuboid

Section 7

Amy had 10p. She spent 7p. What coins will she get as change?

2p and 1p or 3x1p



Section 8

13 is five less than what number?

18

Year 2 Spring 1 Maths Activity Mat 6

Section 1

Put the correct operation into the calculations to complete the number sentences.

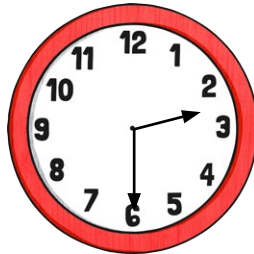
$$24 \quad \square \quad 11 = 13$$

$$10 \quad \square \quad 6 = 60$$

$$34 \quad \square \quad 43 = 77$$

Section 2

What time is shown on the clock?



Section 3

What unit of measurement is used to measure the length of a film? Tick your answer.

- km m
 seconds £
 minutes

Section 4

26 people visited a museum. 18 were adults. How many were children?

Section 5

Tick the coins that make 65p.



Section 6

What 3D shape has one curved face and no vertices?

Section 7

Zac had 40p. He spent 28p. He got two coins in his change. What coins were they?



Section 8

26 is 17 more than what number?

Year 2 Spring 1 Maths Activity Mat 6 Answers

Section 1

Put the correct operation into the calculations to complete the number sentences.

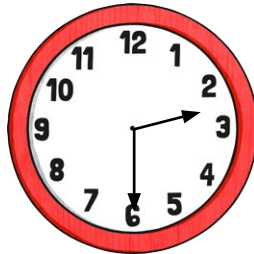
$$24 \begin{array}{|c|} \hline - \\ \hline \end{array} 11 = 13$$

$$10 \begin{array}{|c|} \hline \times \\ \hline \end{array} 6 = 60$$

$$34 \begin{array}{|c|} \hline + \\ \hline \end{array} 43 = 77$$

Section 2

What time is shown on the clock?



half past two

Section 3

What unit of measurement is used to measure the length of a film? Tick your answer.

- km m
 seconds £
 minutes

Section 4

26 people visited a museum. 18 were adults. How many were children?

8

Section 5

Tick the coins that make 65p.



Section 6

What 3D shape has one curved face and no vertices?

sphere

Section 7

Zac had 40p. He spent 28p. He got two coins in his change. What coins were they?

10p and 2p



Section 8

26 is 17 more than what number?

9

Year 2 Spring 1 Maths Activity Mat 6

Section 1

Put the correct operation into the calculations to complete the number sentences.

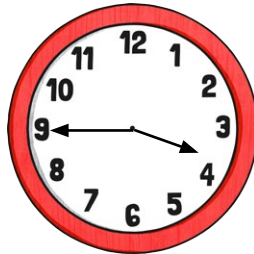
$$40 \square 5 = 8$$

$$56 \square 47 = 103$$

$$86 \square 53 = 33$$

Section 2

What time is shown on the clock?



Section 3

What unit of measurement is used to measure the speed at which a plant grows? Tick your answer.

 cm days seconds minutes

Section 4

59 people visited a museum. 41 were adults. How many were children?

Section 5

Tick the coins that make £1.24.



Section 6

What 3D shape has five faces and five vertices?

Section 7

Yousef had 60p. He spent 34p. He got three coins as change. What coins were they?



Section 8

68 is 18 less than what number?

Year 2 Spring 1 Maths Activity Mat 6 Answers

Section 1

Put the correct operation into the calculations to complete the number sentences.

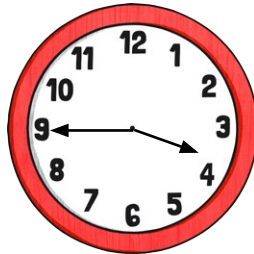
$$40 \boxed{\div} 5 = 8$$

$$56 \boxed{+} 47 = 103$$

$$86 \boxed{-} 53 = 33$$

Section 2

What time is shown on the clock?



quarter to four or 3:45

Section 3

What unit of measurement is used to measure the speed at which a plant grows? Tick your answer.

cm

days

seconds

minutes

Section 4

59 people visited a museum. 41 were adults. How many were children?

18

Section 5

Tick the coins that make £1.24.



Section 6

What 3D shape has five faces and five vertices?

pyramid

Section 7

Yousef had 60p. He spent 34p. He got three coins as change. What coins were they?

20p, 5p and 1p

or other coins adding to this amount



Section 8

68 is 18 less than what number?

86