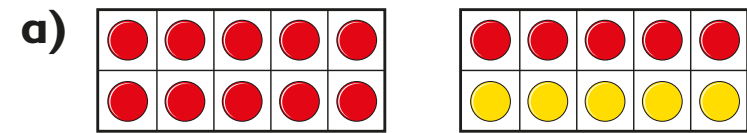


Fact families – addition and subtraction bonds to 20

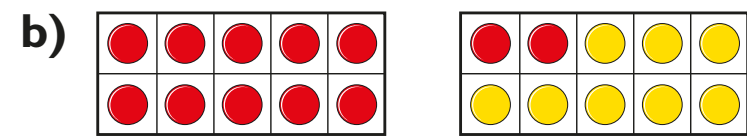


1 What calculations are represented?

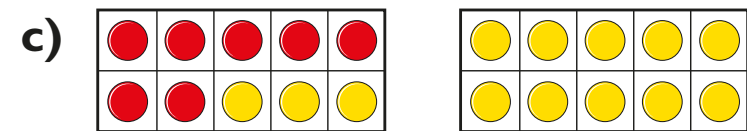
The first one has been done for you.



$$15 + 5 = 20$$



$$\boxed{12} + \boxed{8} = \boxed{20}$$



$$\boxed{7} + \boxed{13} = \boxed{20}$$

d) How many other number bonds to 20 can you make using counters and ten frames?

Various answers.



2 Complete the fact family.

$$\text{a) } 15 + 2 = 17$$

$$17 = 15 + 2$$

$$2 + 15 = \boxed{17}$$

$$\boxed{17} = \boxed{2} + \boxed{15}$$

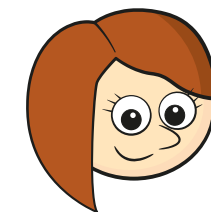
$$17 - 15 = \boxed{2}$$

$$\boxed{2} = \boxed{17} - \boxed{15}$$

$$\boxed{17} - \boxed{2} = \boxed{15}$$

$$\boxed{15} = \boxed{17} - \boxed{2}$$

b)

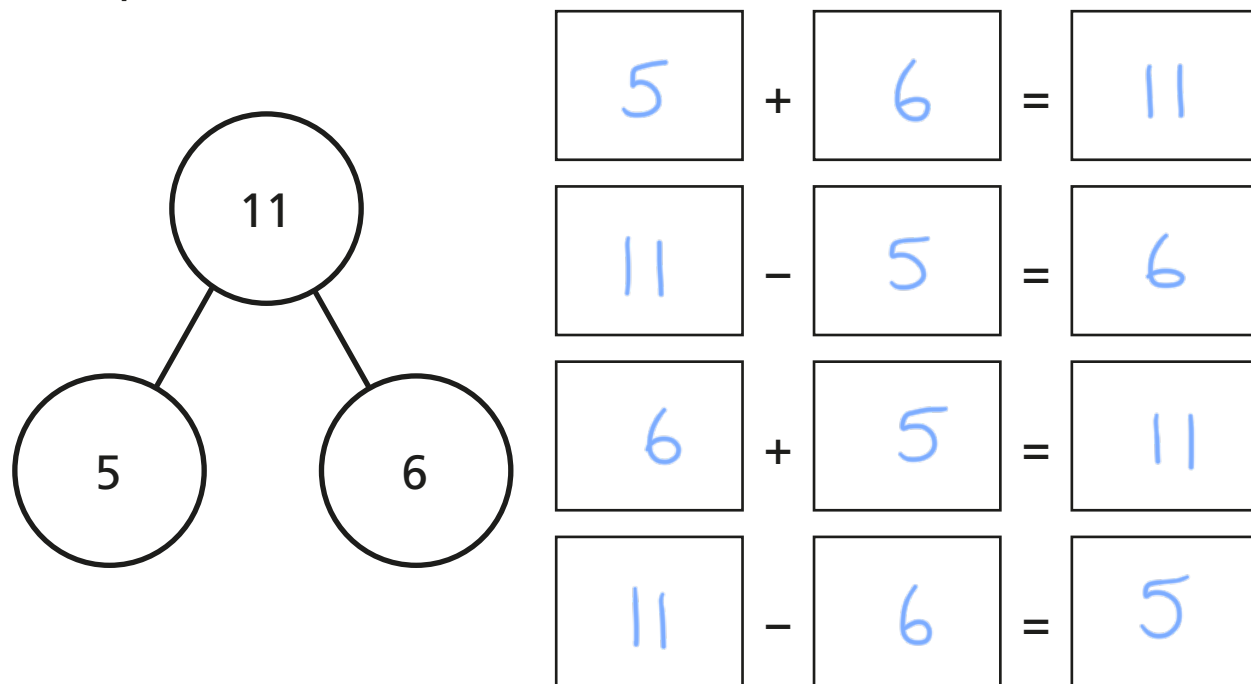


2 - 17 = 15 should be in the fact family.

Explain why Rosie is wrong.



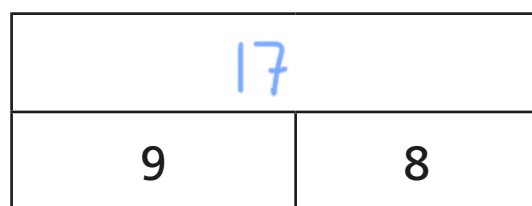
- 3 Complete the number sentences for the part-whole model.



Are there any other number sentences in this fact family?

Talk about it with a partner.

- 4 There are 9 boys and 8 girls in a class. Complete the bar model to represent this.



Write the fact family for the bar model.

$9 + 8 = 17$ $8 + 9 = 17$ $17 - 8 = 9$ $17 - 9 = 8$
 $17 = 9 + 8$ $17 = 8 + 9$ $9 = 17 - 8$ $8 = 17 - 9$

- 5 Circle any incorrect calculations.

$3 + 7 = 10$

$10 = 3 + 7$

$7 + 3 = 10$

$10 = 7 + 3$

$10 - 7 = 3$

$7 - 3 = 10$

$3 - 10 = 7$

$7 = 10 - 3$

Explain the mistake that has been made.

- 6 Here are some number cards.



Choose two number cards and find their total.

E.g. $7 + 6 = 13$

Write the fact family for this calculation.

Compare answers with a partner.

